

Appendix C: LVS[®] 95XX Data Backup

Copyright ©2019
Omron Microscan Systems, Inc.
Tel: +1.425.226.5700 / 800.762.1149
Fax: +1.425.226.8250

All rights reserved. The information contained herein is proprietary and is provided solely for the purpose of allowing customers to operate and/or service Omron Microscan-manufactured equipment and is not to be released, reproduced, or used for any other purpose without written permission of Omron Microscan.

Throughout this manual, trademarked names might be used. We state herein that we are using the names to the benefit of the trademark owner, with no intention of infringement.

GS1 Solution Partner



Disclaimer

The information and specifications described in this manual are subject to change without notice.

Latest Manual Version

For the latest version of this manual, see the Download Center on our web site at:
www.microscan.com.

Technical Support

For technical support, e-mail:
Americas_support@microscan.com
EMEA_support@microscan.com
APAC_support@microscan.com
China_support@microscan.com

Warranty

For current warranty information, see: www.microscan.com/warranty.

Omron Microscan Systems, Inc.

United States Corporate Headquarters
+1.425.226.5700 / 800.762.1149

United States Northeast Technology Center
+1.603.598.8400 / 800.468.9503

European Headquarters
+31.172.423360

Asia Pacific Headquarters
+65.6846.1214

Data Backup

Follow the instructions below to backup data on the LVS-95XX system.

1. Log onto the LVS-95XX system.
2. Click the **Archive** tab, and then click **Create backup database**.

The screenshot shows the LVS-95XX system interface with the 'Archive' tab selected. On the left, there is a sidebar with various options, including 'Create backup database' which is highlighted with a red box. The main area displays a table of report data.

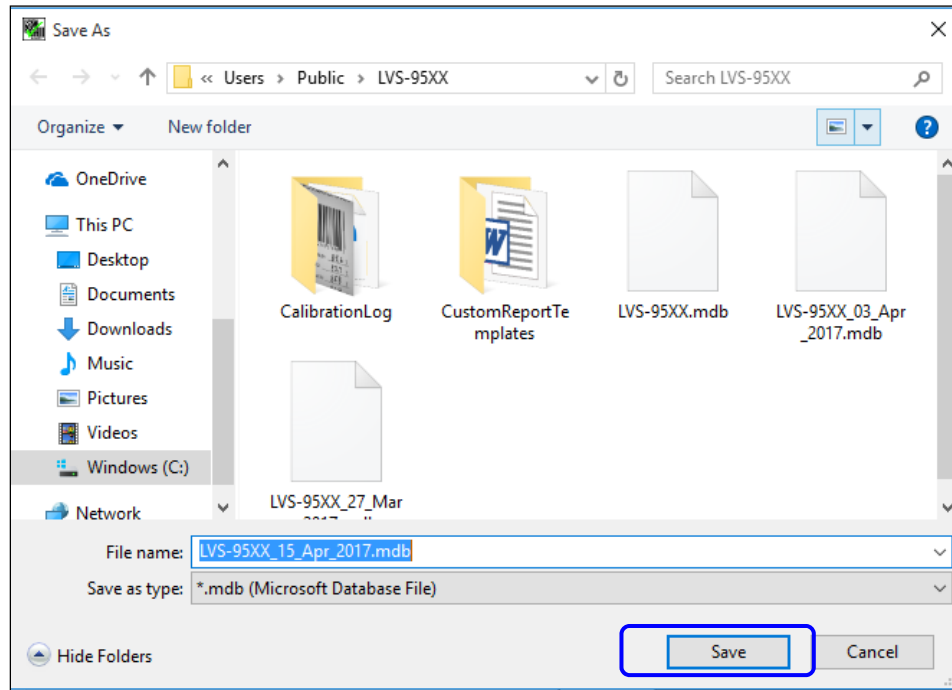
ReportID	SectorID	LcdTime	Reference	OverallGrade	De
494	1	22-Dec-2009 10:21		4.0/10.660 (A)	000
495	1	22-Dec-2009 10:21		4.0/10.660 (A)	000
496	1	22-Dec-2009 10:21		4.0/10.660 (A)	000
497	1	22-Dec-2009 10:25		4.0/10.660 (A)	000
498	1	22-Dec-2009 10:36		4.0/10.660 (A)	000
499	1	22-Dec-2009 10:47		2.7/06.660 (B)	012
500	1	22-Dec-2009 10:47		2.7/06.660 (B)	012
501	1	22-Dec-2009 10:47		2.7/06.660 (B)	012
502	1	22-Dec-2009 10:47		2.8/06.660 (B)	012
503	1	22-Dec-2009 10:48		2.8/06.660 (B)	012
504	1	22-Dec-2009 10:48		1.0/06.660 (D)	012
505	1	22-Dec-2009 10:48		2.7/06.660 (B)	012
506	1	22-Dec-2009 10:48		3.7/06.660 (A)	012
507	1	22-Dec-2009 10:48		3.7/06.660 (A)	012
508	1	22-Dec-2009 10:48		3.7/06.660 (A)	012
509	1	22-Dec-2009 10:48		3.7/06.660 (A)	012
510	1	29-Dec-2009 11:08		4.0/06.660 (A)	012
511	1	29-Dec-2009 11:08		4.0/06.660 (A)	012

Below the table, there are radio buttons for 'Preview results in above table' (selected) and 'Generate HTML file (for printing)'. At the bottom, there is a query input field with the text 'Select ReportID, SectorID, LcdTime, Reference, OverallGrade, DecodedText Fr...' and an 'Execute query' button.

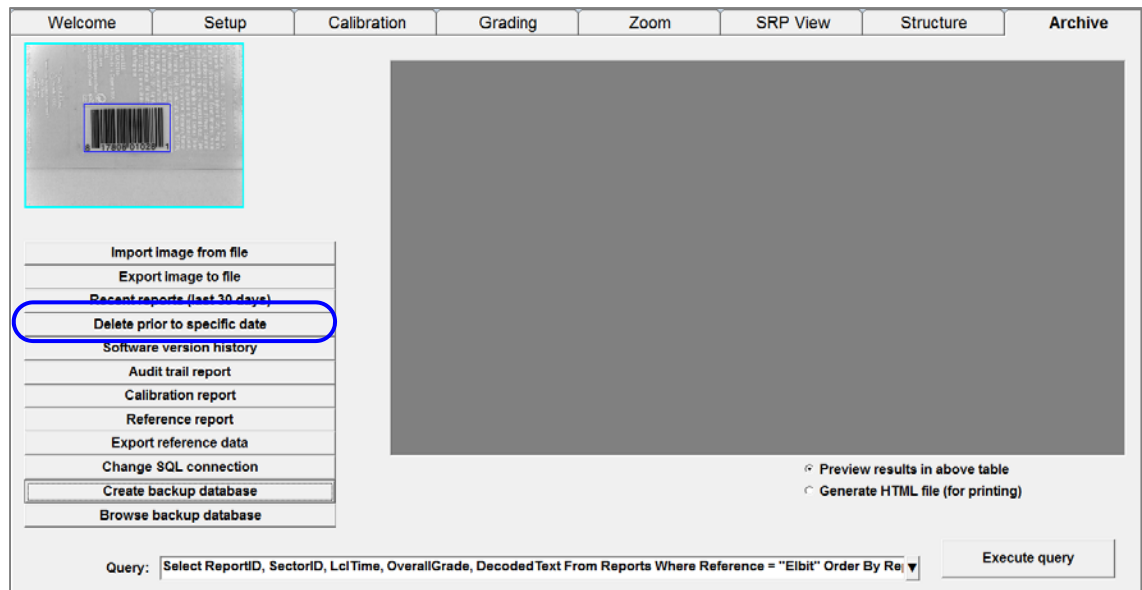
3. Click the **Save in** drop-down list and select the folder or drive to which you want to save.

The screenshot shows a Windows 'Save As' dialog box. The 'Save in' drop-down list is open, showing the path 'Users > Public > LVS-95XX'. The file name is 'LVS-95XX_15_Apr_2017.mdb' and the 'Save as type' is '*.mdb (Microsoft Database File)'. The 'Save' button is highlighted with a red box.

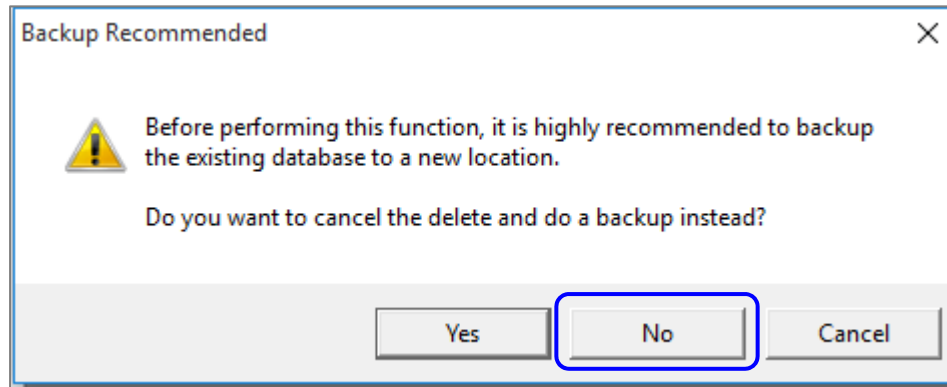
4. In the **File name** box, enter a new name for the file, or keep the default file name which is entered as LVS-95XX_[current date].



5. Click **Save**.
6. After Backing up the database, select **Delete prior to a specific date**.



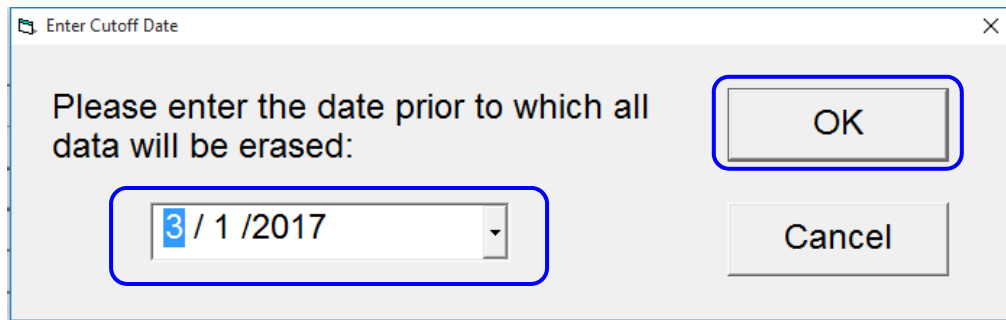
7. If you *did not* create a backup, the below warning will appear prompting to perform the backup first..



If backup has been performed, select **No**.

8. Enter the date prior to which all data will be erased and select **OK**.

The date should be entered as the date the backup was performed (EX.. Current day).



9. The number of deleted records will be displayed on the screen. After deleting the records, close the software and then reopen it. The database will automatically compact and the Archive tab will not contain data prior to today's date.

The Backed up databases can be accessed by selecting Browse backup database.

